



SPSS[®] Statistics for Windows[®] Abbreviated Installation Instructions (Site License)

The following instructions are for installing SPSS Statistics using a site license.

During installation, you will be prompted for the following information. Except for the serial number, all information is required. This information will be provided when you purchase a site license from the UI Bookstore. Contact ITS Help Desk Support (<http://helpdesk.its.uiowa.edu/>) if you do not have the required information.

Name:

Organization:

Serial Number:

Authorization Code:

Installing SPSS Statistics

When you purchase a site license, a network location from which to download and install SPSS Statistics will be provided.

The procedure for installing SPSS Statistics is contained in this document. Check with ITS-Help Desk Support (<http://helpdesk.its.uiowa.edu/>) if you experience any difficulty following this procedure. *Note:* To install SPSS Statistics, you must be logged on to your computer with administrator privileges.

Upgrading from a Previous Release

You do not need to uninstall an old version of SPSS Statistics before installing the new version. If you want to keep both versions, be sure to install the new version in a separate directory. If you install the new version in the same directory in which a previous version is installed, the previous version will be automatically uninstalled.

Installing from a Downloaded File

Windows XP

- Download the file from the location specified on the site license agreement.
- Double-click the file that you downloaded, and then follow the instructions that appear on the screen. See [Notes Specific to UI Installation](#) below for any special instructions.

Windows Vista

You must run the installer as administrator:

- Download the file from the location specified on the site license agreement. *Note:* When you download the file you may be asked by Vista security if you wish to continue this operation. If you fail to respond positively to this request, the download will cease and you will not be able to install the software unless you restart the process.
- Using Windows Explorer, browse to folder where you downloaded the file.
- Right-click the downloaded file and choose Run as Administrator.
- Follow the instructions that appear on the screen. See [Notes Specific to UI Installation](#) in this document for any special instructions.

Notes Specific to UI Installation

This section contains special instructions for this installation.

License type: Be sure to select Site License.

Serial number and Authorization Code: When you purchased your license from the UI Bookstore you should have been provided a serial number and an authorization code. Contact ITS Help Desk Support (<http://helpdesk.its.uiowa.edu>) if you did not receive the serial number and authorization code.

Help language: SPSS Statistics provides the ability to change the user interface language. If you want the help language to always match the user interface, select Install Help in all languages. Installing help for all languages significantly increases disk space requirements.

Note: Previous versions of SPSS required separate authorization codes for SPSS Base, Regression, and Advanced Models. SPSS Statistics no longer requires a separate code for each module.

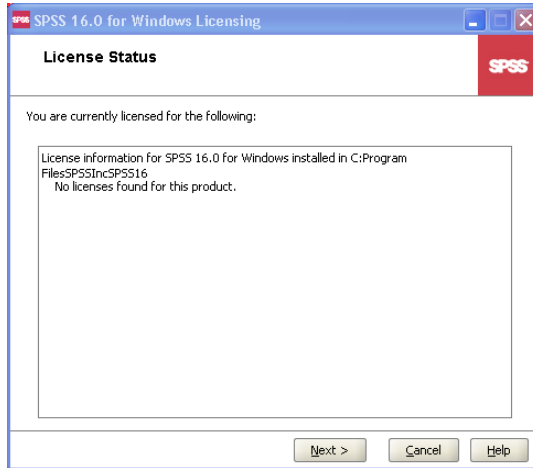
Using the License Authorization Wizard

Note: If you are running Windows Vista, you may be prompted for administrator credentials. Without the correct credentials, you will not be able to run the License Authorization Wizard.

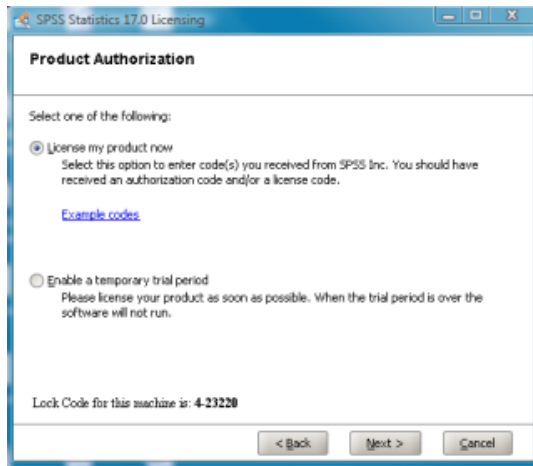
- If you don't launch the License Authorization Wizard during installation or cancel the License Authorization Wizard before obtaining a license, you can launch it by choosing License Authorization Wizard in the Windows Start menu program group for SPSS Statistics.



- The License Wizard will automatically drop into a License Status window which reports the SPSS products currently licensed to operate on your computer.



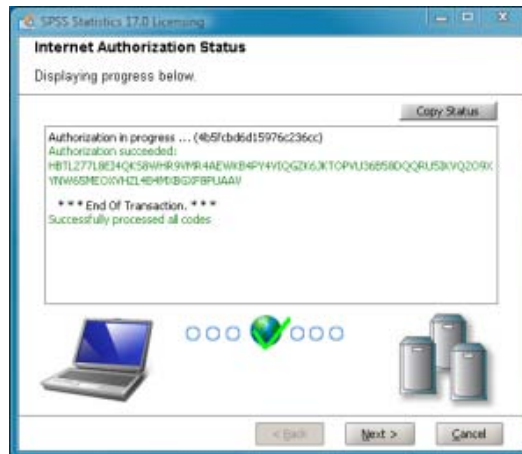
- Select Next. The Wizard will proceed to the Choose Licensing Method window. Choose License my product now.



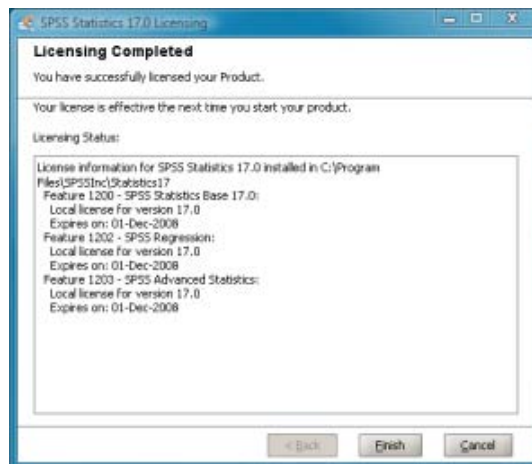
- Select Next. Enter one or more authorization codes and select Next. You can authorize more than one SPSS product in this step by selecting Enter additional codes. Each authorization code must be entered in the same format as that provided by the UI Bookstore (upper/lower case rules apply).



- Select **Next** to send the email message. Please allow sufficient time for your computer to open an internet connection and establish connection to the SPSS Inc. license verification server. This may take only a few seconds or several minutes if the server is busy. You will receive a progress report showing each step of the authorization process.



- Select **Next** and the final window will appear, showing that the licensing has been completed.



- Select **Finish** and you are now ready to use the SPSS product or products that you have successfully licensed.

If you have questions or need assistance in executing these instructions, please contact ITS Help Desk Support at 319-384-4357 or send email to <http://helpdesk.its.uiowa.edu/>.